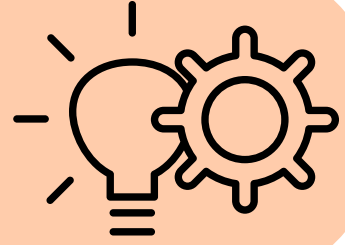


# HIGH RISK

## LOW REWARD

### 1. ASTRONOMICAL VALUE THESIS

Efforts to mitigate existential risk have astronomical value.



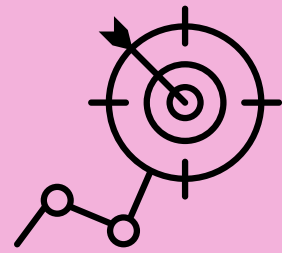
### 2. EXISTENTIAL RISK PESSIMISM

Levels of existential risk are very high.



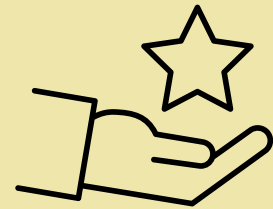
### 3. THE PROBLEM:

Astronomical Value Thesis is in tension with Existential Risk Pessimism.



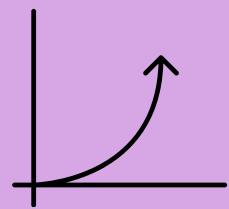
### 4. DEMONSTRATING THE PROBLEM

Models show that pessimism decreases the value of risk mitigation efforts.



### 5. TIME OF PERILS

Only viable way out is the *time of perils hypothesis*: risk will soon drop by many orders of magnitude.



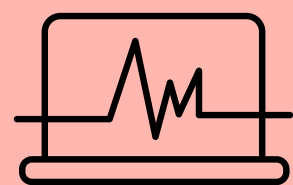
### 6. ARG 1: SPACE

Some say the time of perils will end once humanity becomes spacebound. I argue that this is unlikely.



### 7. ARG 2: WISDOM

Some say the time of perils will end once humanity becomes wiser. I argue this is unlikely.



### 8. ARG 3: KUZNETS

Some say the time of perils will end once humanity becomes wealthier. I argue that this rests on mistaken assumptions.

